

Village of Maywood I-290 Advisory Working Group

January 21, 2016





- Introductions
- Advisory Working Group outline
- Anticipated schedule
- Summary of issues and concerns
- Addressing identified concerns
- Next steps
- Questions and answers

Advisory Working Group (AWG) Outline

AWG Purpose

- Develop consensus plan for Maywood area

Membership

- Determined by Maywood

Meeting Format

- Open meeting
- Evenings
- Process to notify stakeholders

Final project decisions will be made by IDOT

- Broader stakeholder context – Bellwood, Broadview, CTA
- State/Federal standards
- Consideration of safety, impacts and costs, as well as travel performance

Anticipated Schedule

- Monthly AWG meetings (January through May)
- Village Board status presentations (March, May)
- IDOT Public Hearing – Summer 2016
- Overall I-290 Study Completion – Late 2016
- *Phase II (final design and land acquisition) and Phase III (construction) are not currently funded*



Summary of Community Concerns from 12/7 Town Hall Meeting



Stakeholder engagement

- General awareness of I-290 study
- Level of participation

Transportation needs

- Congestion
- Travel Patterns
- Access

Potential impacts

- Interchange access
- Local congestion
- Property acquisition
- Economic concerns

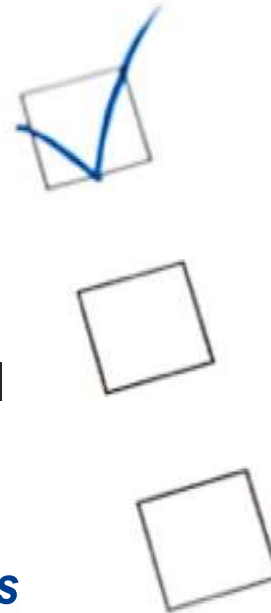
Potential Benefits

- Congestion relief
- Safety
- Economic development

Discussion

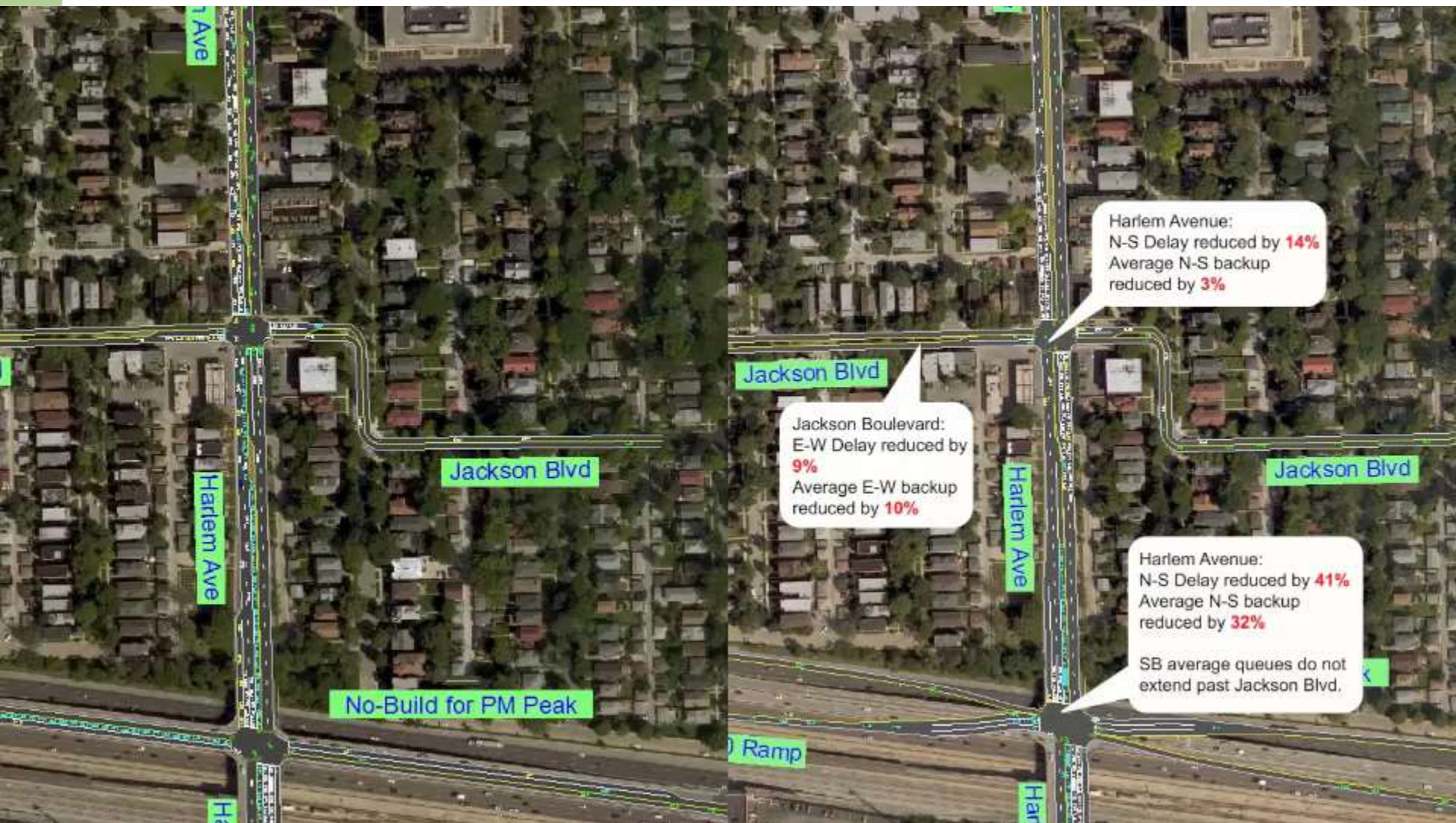
Addressing those concerns

- ① Frequent and focused ***two-way communication***
- ② Review of ***overall project analyses*** as needed
- ③ Data ***collection and analysis***
 - Local traffic volumes
 - Local travel patterns
- ④ Define ***transportation needs*** at community level
- ⑤ Identify and evaluate ***access alternatives***
- ⑥ Clearly define ***community impacts and benefits***
- ⑦ Use ***improved methods for displaying data***
- ⑧ Identify ***consensus plan***

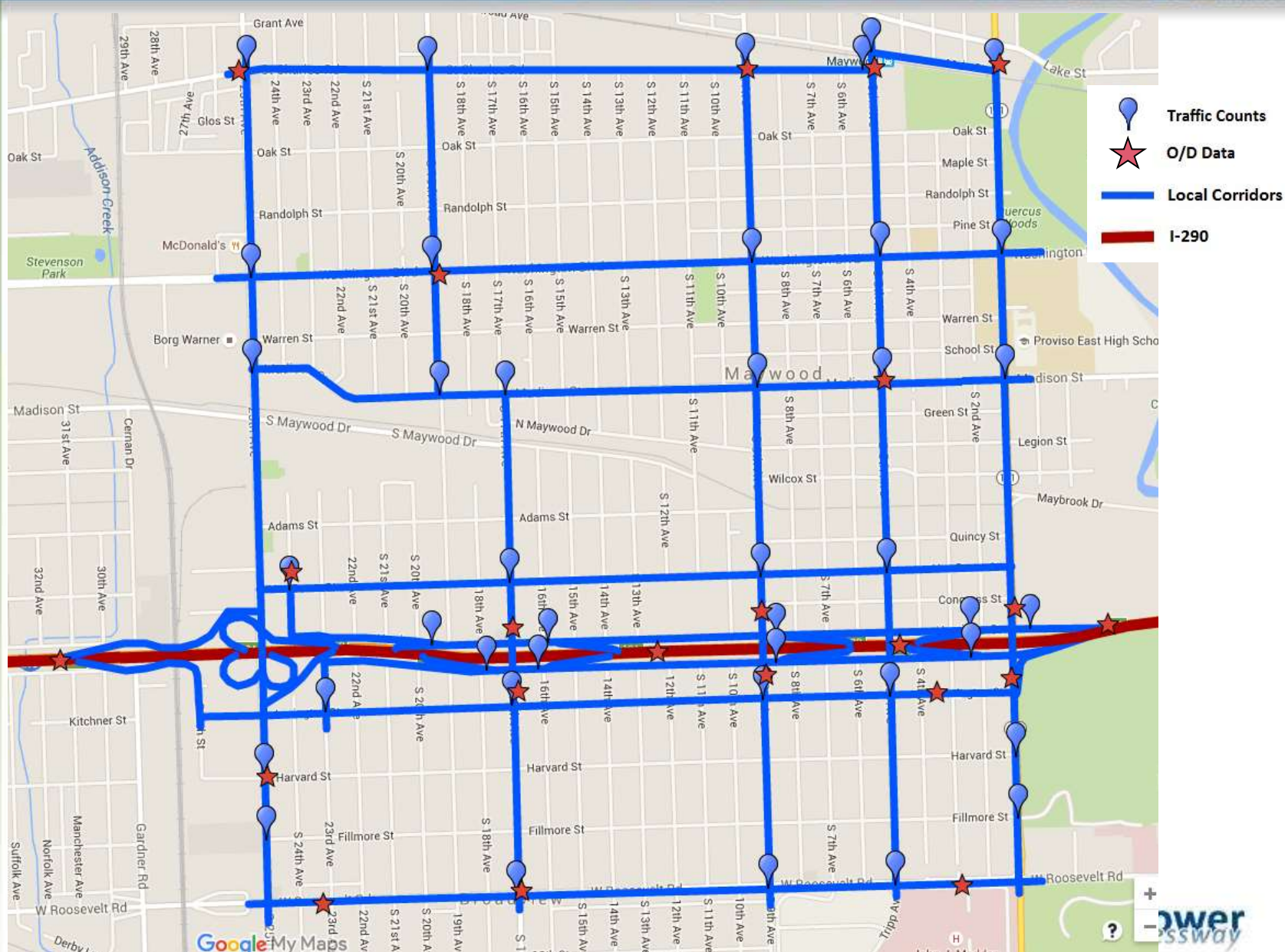


Discussion

Simulation Video Example – Harlem Avenue



Traffic Data Collection Locations

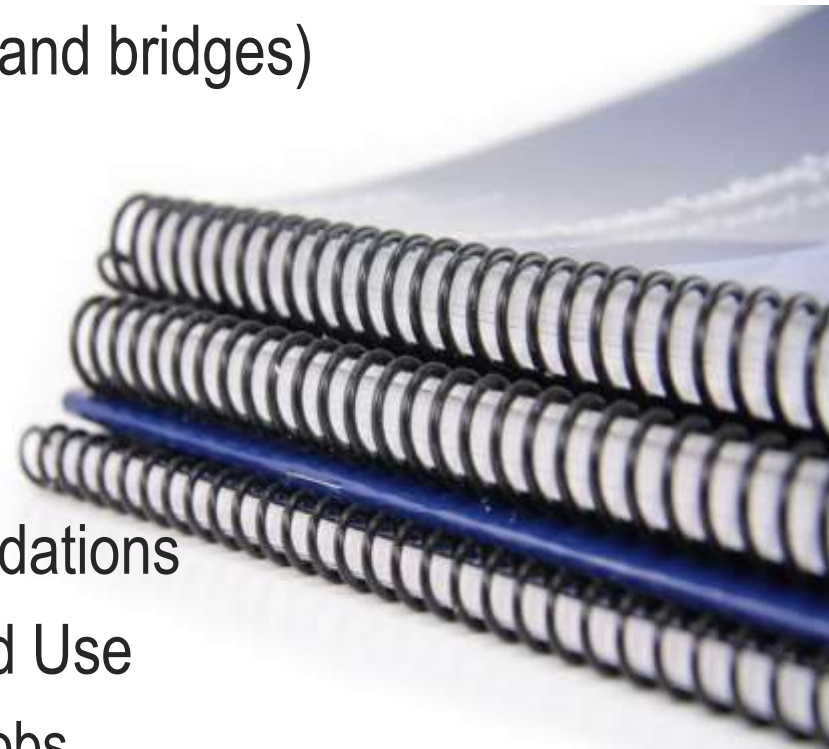


Defining Transportation Needs – overall study context



■ Problem Statement

- Traffic congestion (expressway and arterials)
- Infrastructure disrepair (roadway and bridges)
- Safety
- Truck traffic
- Noise and Air pollution
- Access/connectivity to transit
- Pedestrian and bicycle accommodations
- Integration of Transportation/Land Use
 - Urban reinvestment, access to jobs, livable communities, physical community cohesion



Purpose and Need

- Developed early in the I-290 planning process (2010–2013)
- A concise statement of the transportation needs to be addressed by the project
- Based upon technical analysis, stakeholder reviews
- Assessment of existing and year 2040 “No Build” conditions



Purpose and Need

① Improve local and regional travel



I-290 and surrounding arterials are congested; will worsen by 2040

Purpose and Need

② Improve access to employment



**Current and
future congestion
impacts auto and bus
travel times**

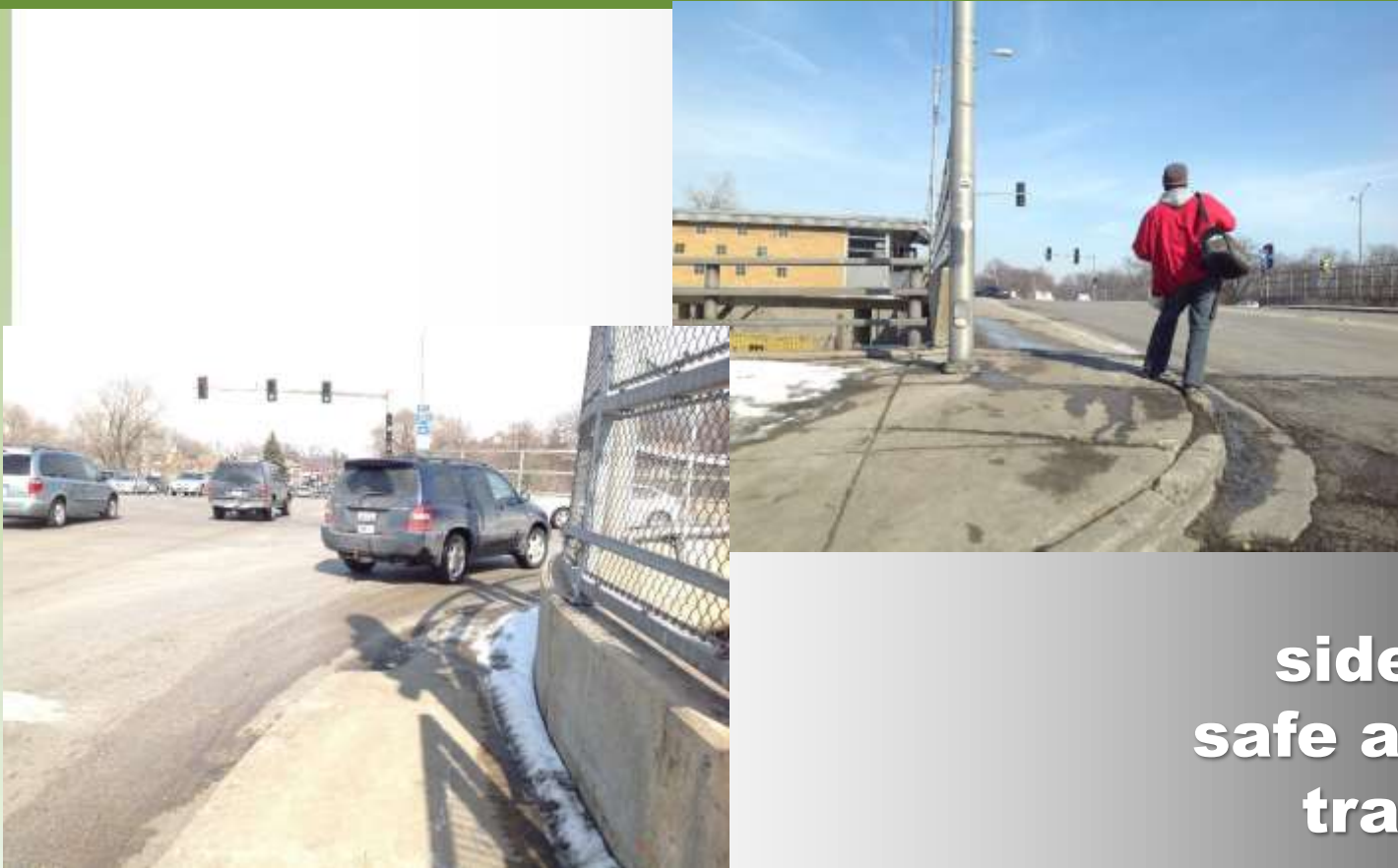
Purpose and Need

③ Improve safety for all users

- Address high crash rate and severity of crashes



④ Improve modal connections and opportunities



- **Narrow sidewalks limit safe and efficient transit access**

⑤ Improve facility condition/design

- **Roadway and bridges are beyond their design life**
- **Substandard roadway designs**
- **Narrow sidewalks**
- **Does not meet ADA requirements**

Community Context – Mobility

Village of Maywood Transportation & Mobility



Maywood Comprehensive Plan (2014)

Key
Village of Maywood
Highways
Rivers, Streams, & Lakes

Proposed
Functional Classification
Interstate
Principal Arterial
Minor Arterial
Collector
2040 CMAP Average Daily
Traffic (ADT)

Recommendations

Existing Traffic Signal
Traffic Signal Modernization
Existing Interchange
Planned Interchange
Improvement
Expressway Expressway
Reconfiguration Planned
Priority Vehicle Access
Management
Potential Residential
Curb-to-Curb

Corridors

Principal Arterials

- 1st Avenue
- Roosevelt Road

Minor Arterials

- 5th Avenue
- Madison Street
- St. Charles Road
- 9th Avenue
- 17th Avenue
- Washington Street

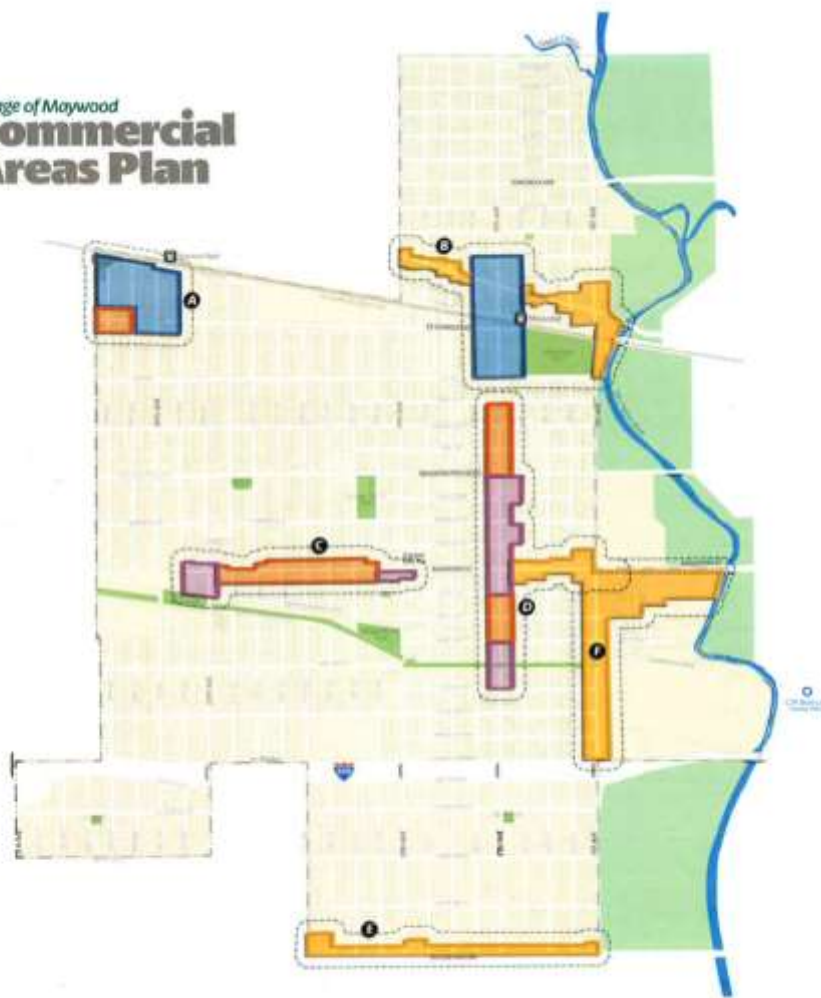
Note: 25th Avenue also has a role

General Themes

- Traffic Signal Modernization
- Interchange Improvements
- Traffic flow
- Non-motorized Travel
- Transit Access

Community Context – Commercial Areas

Village of Maywood Commercial Areas Plan



Key
Village of Maywood
Railroads
Streams, Creeks, & Lakes

Commercial Character Types
Travel-Oriented Development
Pedestrian-Mixed Use
Transitional
Community

Commercial Areas

1 Madison Street Corridor Framework
See Page 64
2 5th & Lake Street Framework
See Page 66
3 5th Avenue Framework
See Page 70

4 Madison Street Corridor Framework
See Page 76
5 Roosevelt Road Corridor Framework
See Page 80
6 1st Avenue Corridor
See Page 82

Main Corridors

- 1st Avenue
 - Main N-S Arterial
- Roosevelt Road
 - Provides access/mobility to S. Maywood
- 5th Avenue
 - Primary N-S Commercial Corridor
- Madison Street
 - Infill opportunities

General Themes

- Appropriate Density
- Parcel Access Control
- Non-motorized Travel
- Streetscape/Identity

Community Context – Industrial Areas



Main Corridors

- 1st Avenue
- Wilcox Street
- St. Charles Road
- 25th Avenue - for access

General Themes

- Improve/Manage Truck Access
- Buffering
- Historic Places
- Aesthetics/Landscaping

Community Context – Community Features

Village of Maywood Image, Identity, & Community Character



Key			

Corridors

- 1st Avenue
- Lake Street
- 5th Avenue
- Madison Street
- Roosevelt Road

General Themes

- Aesthetic Enhancements
 - Streetscape Expansion
 - Gateway Opportunities



- Perform additional data collection and analysis
- Schedule field review
- Next meeting

Thursday, February 25, 2016

6:00 PM – 8:00 PM

**Topics – existing conditions review,
identify potential new alternatives**



Thank You!